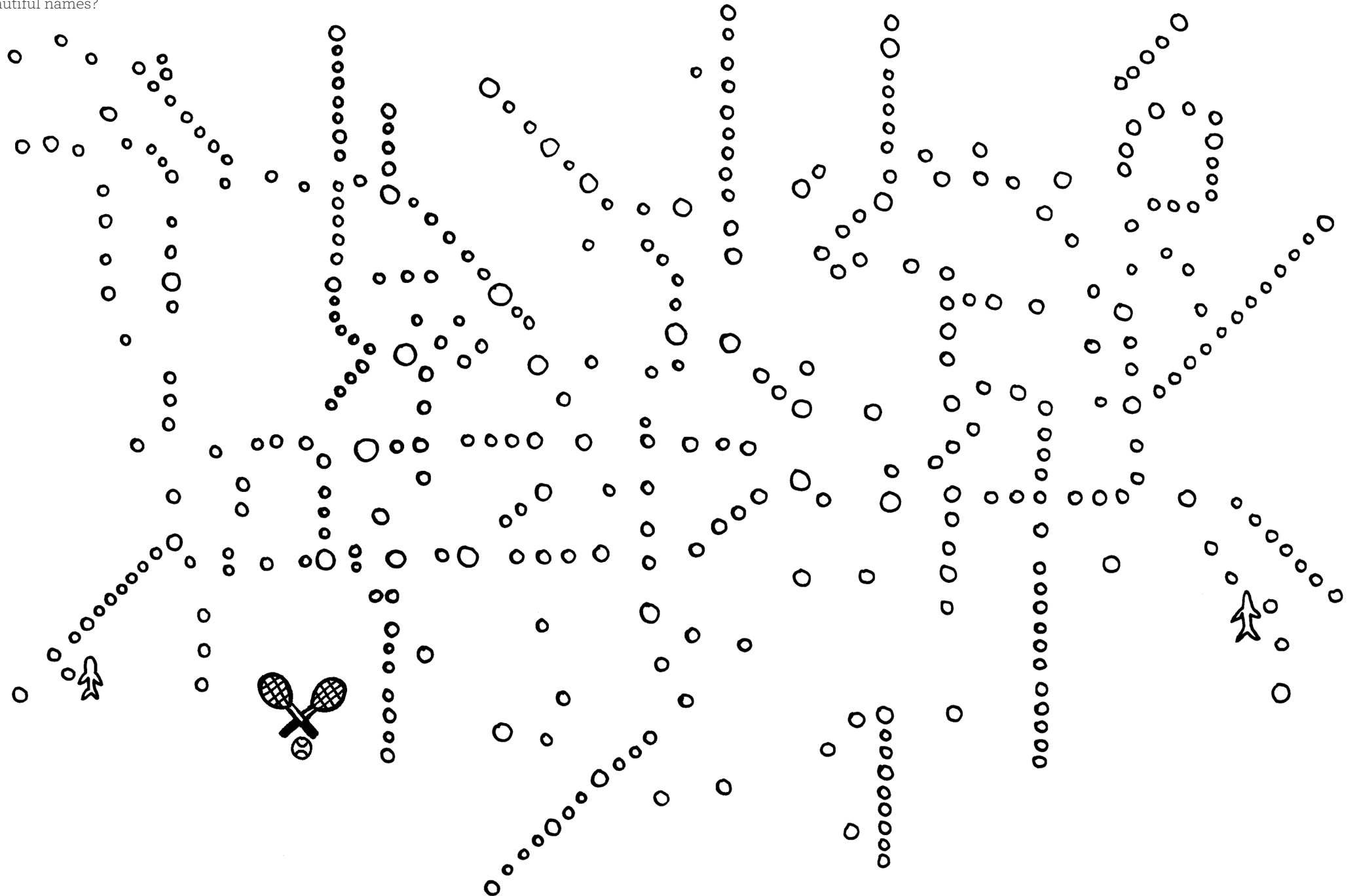


I NEED TO GET TO KNOW LONDON AGAIN. BREATHE  
IT IN. EVERY QUIVER OF ITS BEATING HEART.

SHERLOCK HOLMES

# UNDERGROUND FOR PROS

Draw from the example of an actual Tube map:  
which London Underground have  
you taken, where did you get off, and what  
are the most beautiful names?



# QUEEN ELIZABETH II

How many hats, crowns and scarfs do you think Queen Elizabeth II, born in 1926, has worn in her lifetime? She has been the queen since 1952, and there are countless photographs of her wearing countless kinds of headgear. Design a new one for her and colour the others.



# TO THE MARKET

Yes, the London markets are famous. Some are fully dedicated to provisions and food, others offer vintage clothing and interior decoration accessories. Perfect day out on the weekend!

## ☐ SUNDAY UPMARKET

Ely's Yard, The Old Truman Brewery  
London E1 6QL  
[www.sundayupmarket.co.uk](http://www.sundayupmarket.co.uk)

## ☐ BOROUGH MARKET

Southwark Street, London SE1 1TL  
[boroughmarket.org.uk](http://boroughmarket.org.uk)

## ☐ MALTBY STREET MARKET

The Ropewalk, Maltby Street  
London SE1 2HQ  
[www.maltby.st](http://www.maltby.st)

## ☐ PORTOBELLO ROAD MARKET

Portobello Road, London W10 5TA  
[www.portobelloroad.co.uk](http://www.portobelloroad.co.uk)

## ☐ BROADWAY MARKET

Broadway Market, London E8  
[www.broadwaymarket.co.uk](http://www.broadwaymarket.co.uk)

## ☐ SPITALFIELDS MARKET

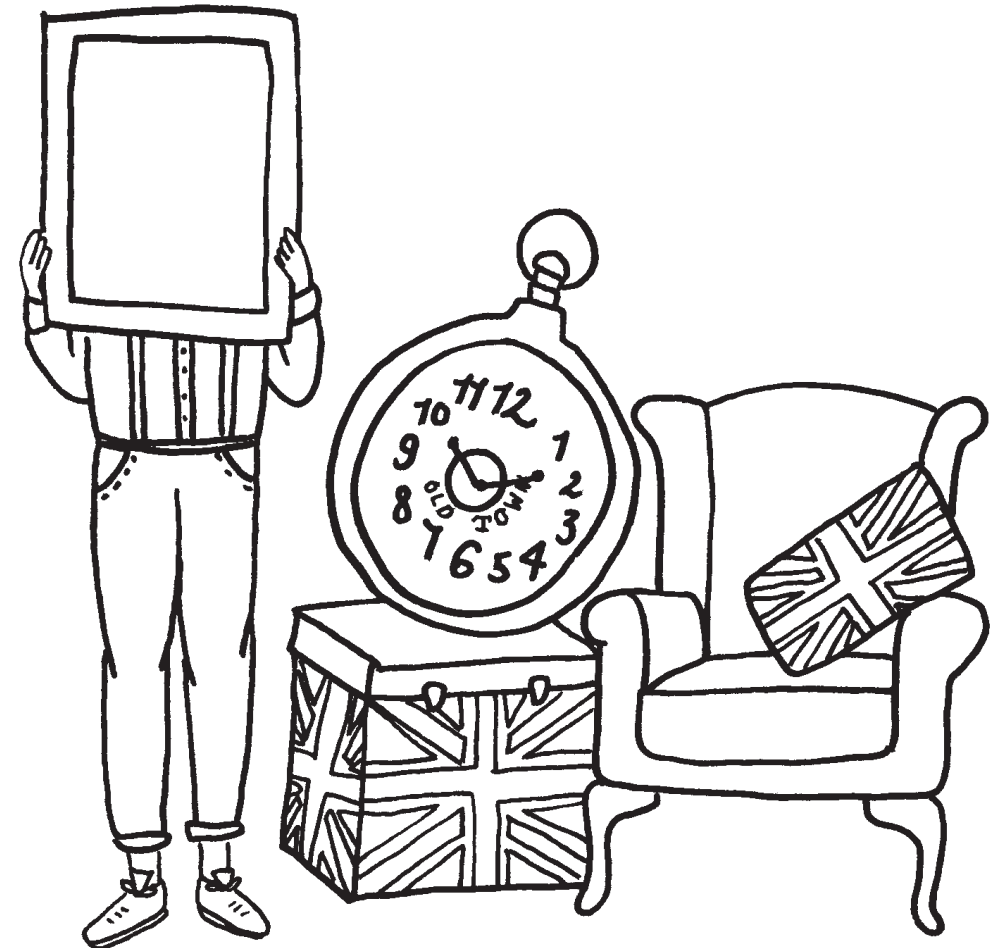
Brushfield Street, London E1 6AA  
[www.spitalfields.co.uk](http://www.spitalfields.co.uk)

## ☐ CHATSWORTH ROAD MARKET

Chatsworth Road, London E5  
[www.chatsworthroade5.co.uk/market/](http://www.chatsworthroade5.co.uk/market/)

## ☐ SMITHFIELD MARKET

London Central Markets, London EC1A 9PS  
[www.smithfieldmarket.com](http://www.smithfieldmarket.com)





TANNER & LAWSON

THE ROYAL OAK

• Blossom •

Cafe Columbia

TEA

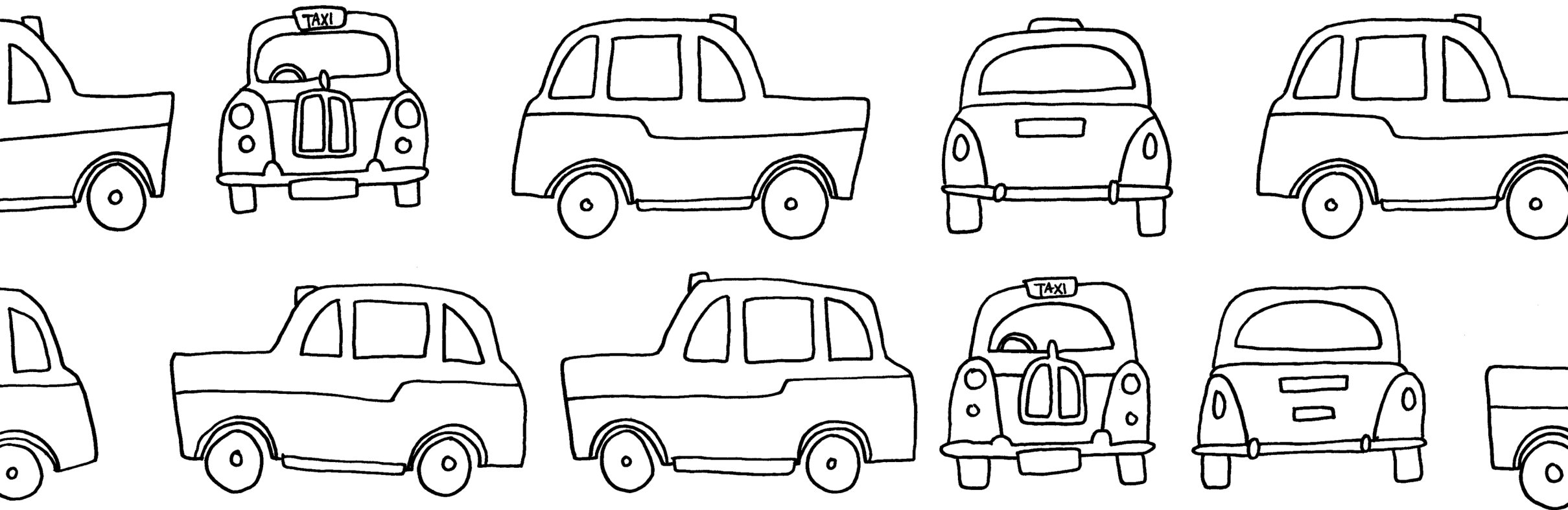
FRUIT  
BAGELS

COFFEE

Cafe Columbia

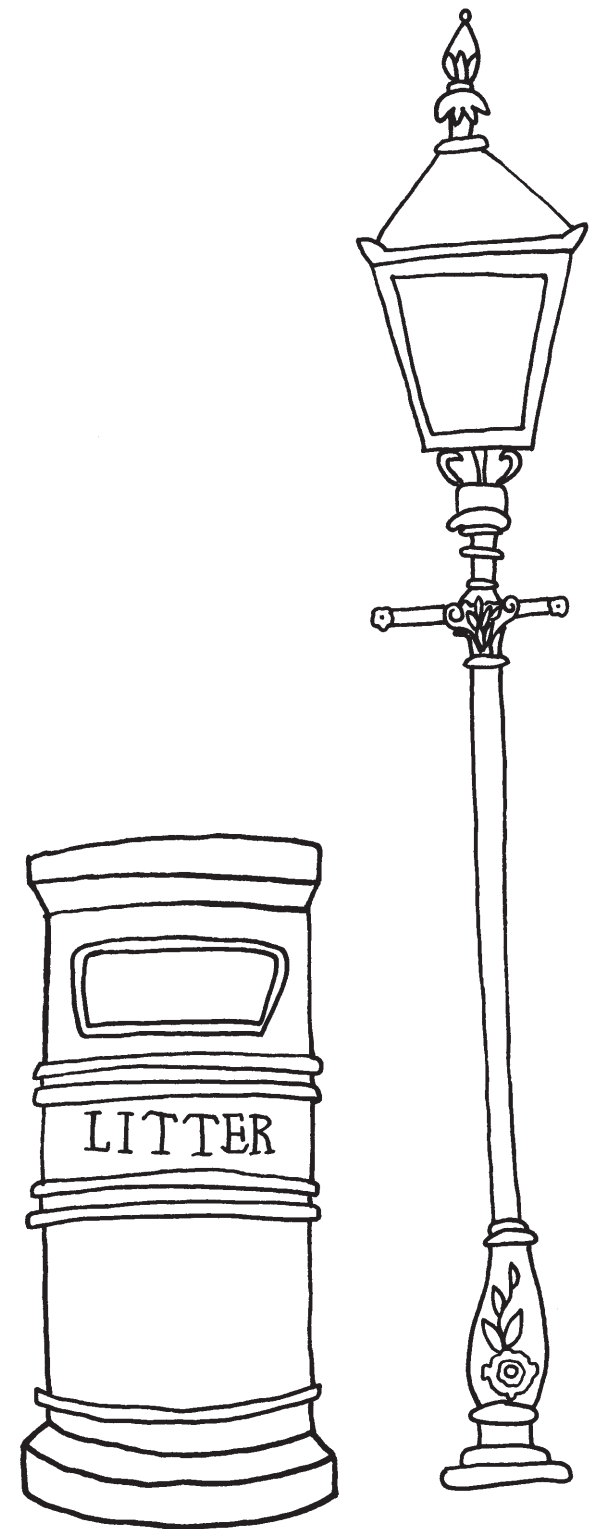
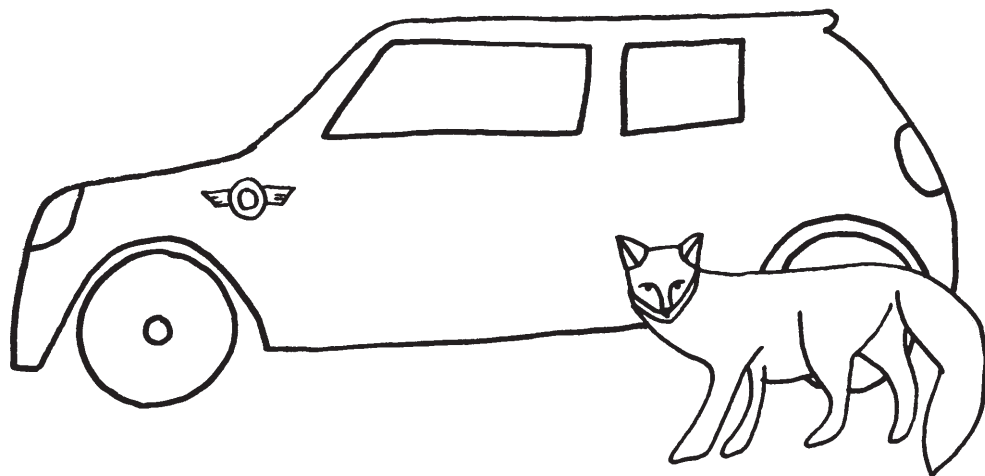
# 25.000 BLACK CABS

Black Cabs, the well-known London taxis, can truly be spotted all over the city. They used to all be black, but nowadays they come in other colours, too. Make it your best work.



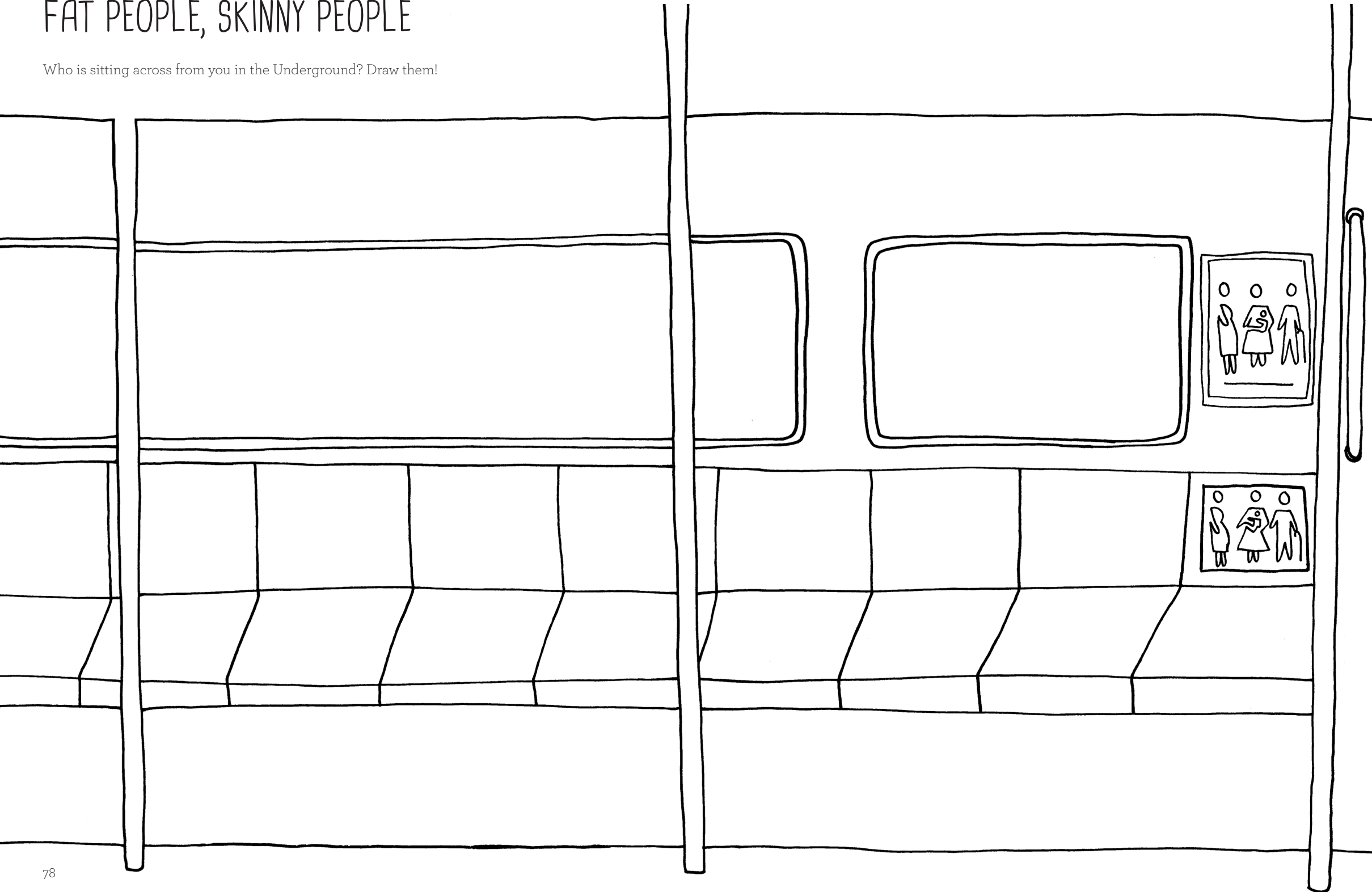
# THE FANTASTIC MR FOX

You might just spot one out of nowhere, in the middle of the street and also in broad daylight: there are thousands of foxes living in London. It is unknown how many there are exactly, as estimates run from 5,000 up to more than 30,000.



# TALL PEOPLE, SHORT PEOPLE, FAT PEOPLE, SKINNY PEOPLE

Who is sitting across from you in the Underground? Draw them!



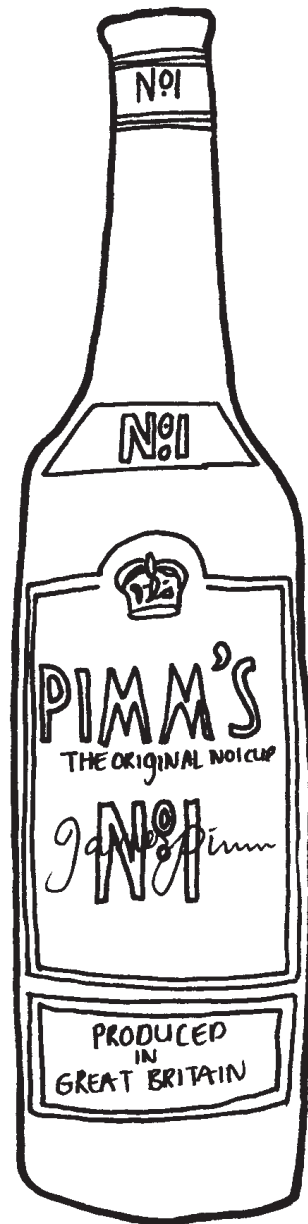


# PIMM'S

Forget hip cocktails or the summer drink hit of the year so and so. For years, Pimm's has been a hit in the UK and with good reason. Pimm's No.1 Cup is a refreshing herbal liqueur with a hint of lemon.

$\frac{1}{3}$  parts Pimm's liqueur  
 $\frac{2}{3}$  parts sparkling lemonade  
slices of lemon  
slices of lime strawberries  
half a cucumber sliced  
leaves from a few sprigs of mint  
ice cubes

Fill  $\frac{3}{4}$  of a large decanter with Pimm's and tasty lemonade. Add some fruit and finish with ice cubes. You can also prepare the Pimm's in this manner for a glass.



# TATE MODERN

Most-visited gallery in the world: nearly 5 million visitors per year.

The Tate Modern, one of the most beautiful galleries we know, displays modern art from 1900 and onwards. It is located in the old Bankside Power Station, which was rendered obsolete in 1981, and was reopened in 2000 as a gallery. In the winter, the Turbine Hall offers large, impressive exhibitions by international artists. In addition to the alternating exhibitions there is also a permanent collection.

