

DU BIST VERRÜCKT MEIN KIND,  
DU MUSST NACH BERLIN.

FRANZ VON SUPPÉ

# MARKERS, PENS, PENCILS & TUBES OF PAINT

## MODULOR

Prinzenstraße 85  
10969 Berlin-Kreuzberg

## CYM

Diepenbachstraße 16  
Planufer 96  
10967 Berlin-Kreuzberg

## KÜNSTLERMAGAZIN

Kastanienallee 33  
10435 Berlin-Prenzlauer Berg

## PETERS ART SHOP

Gottschedtstraße 26  
13357 Berlin-Charlottenburg

## PHIOGRAPHOS GMBH

Knesebeckstraße 3  
10623 Berlin-Charlottenburg

## R.S.V.P.

Mulackstraße 14 & 26  
10119 Berlin-Mitte

## SCHOENE SCHREIBWAREN

Niederbarnimstraße 6  
10247 Berlin-Friedrichshain  
Weinbergsweg 21  
10119 Berlin-Mitte



# BERLIN BREWERIES

Whether it's trendy *craft beer* or just perfectly ordinary Berliner Pilsner, the labels are all appealing. Design your own label on the second bottle.

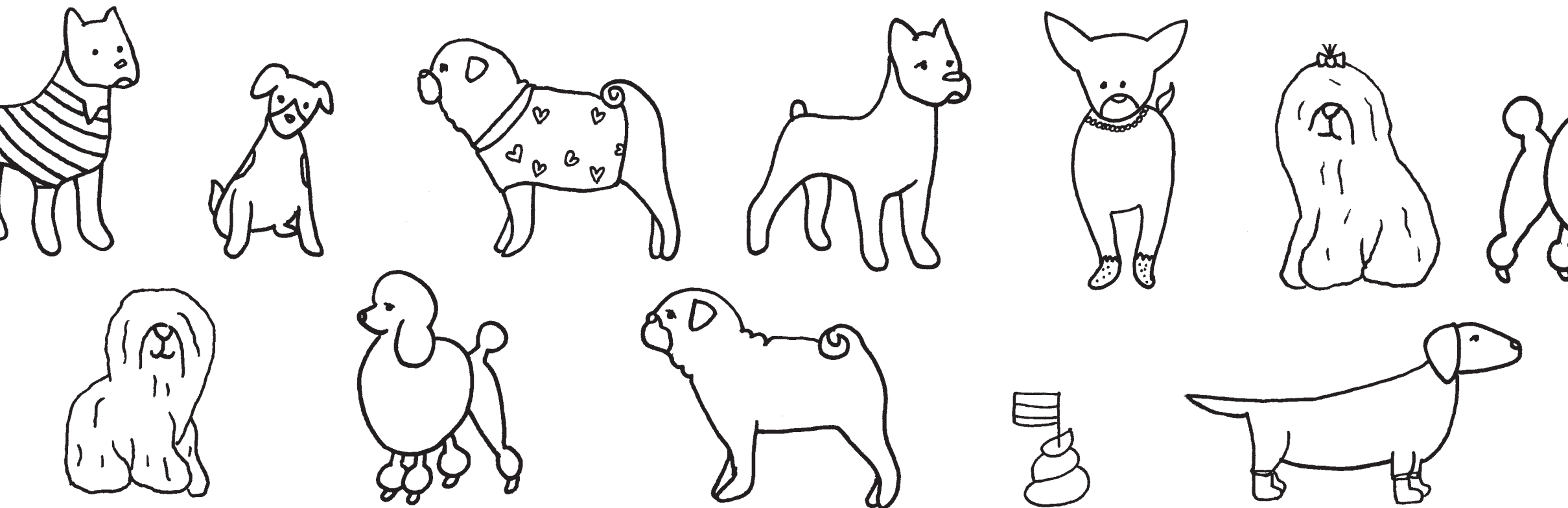




WIR  
BLEIBEN  
ALLE!

## 98014 DOGS

It seems as though everyone in Berlin has a dog. Either the latest it-dog (a pug), a frayed shepherd, a perilous-looking fight dog or a neatly groomed poodle. However, the dog population in the entire city ultimately amounts to no more than 100,000 and that actually doesn't sound so extreme when you take the city's 3.5 million inhabitants into consideration.



# THEATRE, OPERA & TRADITIONAL MUSIC

The lobbies of these venues are particularly good for people watching, but of course they also offer beautiful plays and concerts.

## ☐ KOMISCHE OPER

Behrenstraße 55-57, 10117 Berlin-Mitte  
[www.komische-oper-berlin.de](http://www.komische-oper-berlin.de)

## ☐ VOLKSBÜHNE

Rosa-Luxemburg-Platz, 10178 Berlin-Mitte  
[www.volksbuehne-berlin.de](http://www.volksbuehne-berlin.de)

## ☐ BERLINER ENSEMBLE

Bertolt-Brecht-Platz 1, 10117 Berlin-Mitte  
[www.berliner-ensemble.de](http://www.berliner-ensemble.de)

## ☐ MAXIM GORKI THEATRE

Am Festungsgraben 2, 10117 Berlin-Mitte  
[www.gorki.de](http://www.gorki.de)

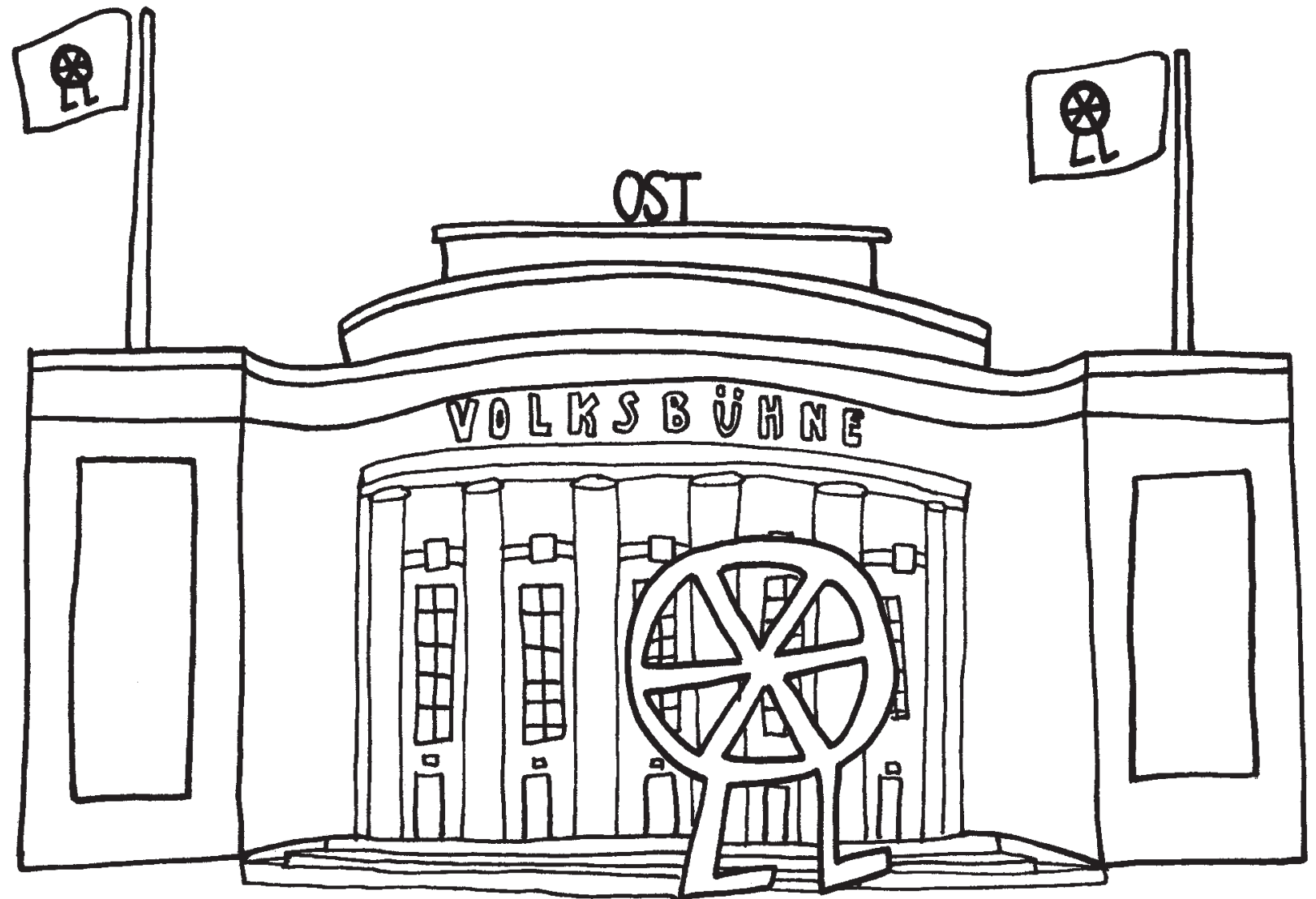
## ☐ BERLINER PHILHARMONIE

Herbert-von-Karajan-Straße 1,  
10785 Berlin-Tiergarten  
[www.berliner-philharmoniker.de](http://www.berliner-philharmoniker.de)

☐ .....

☐ .....

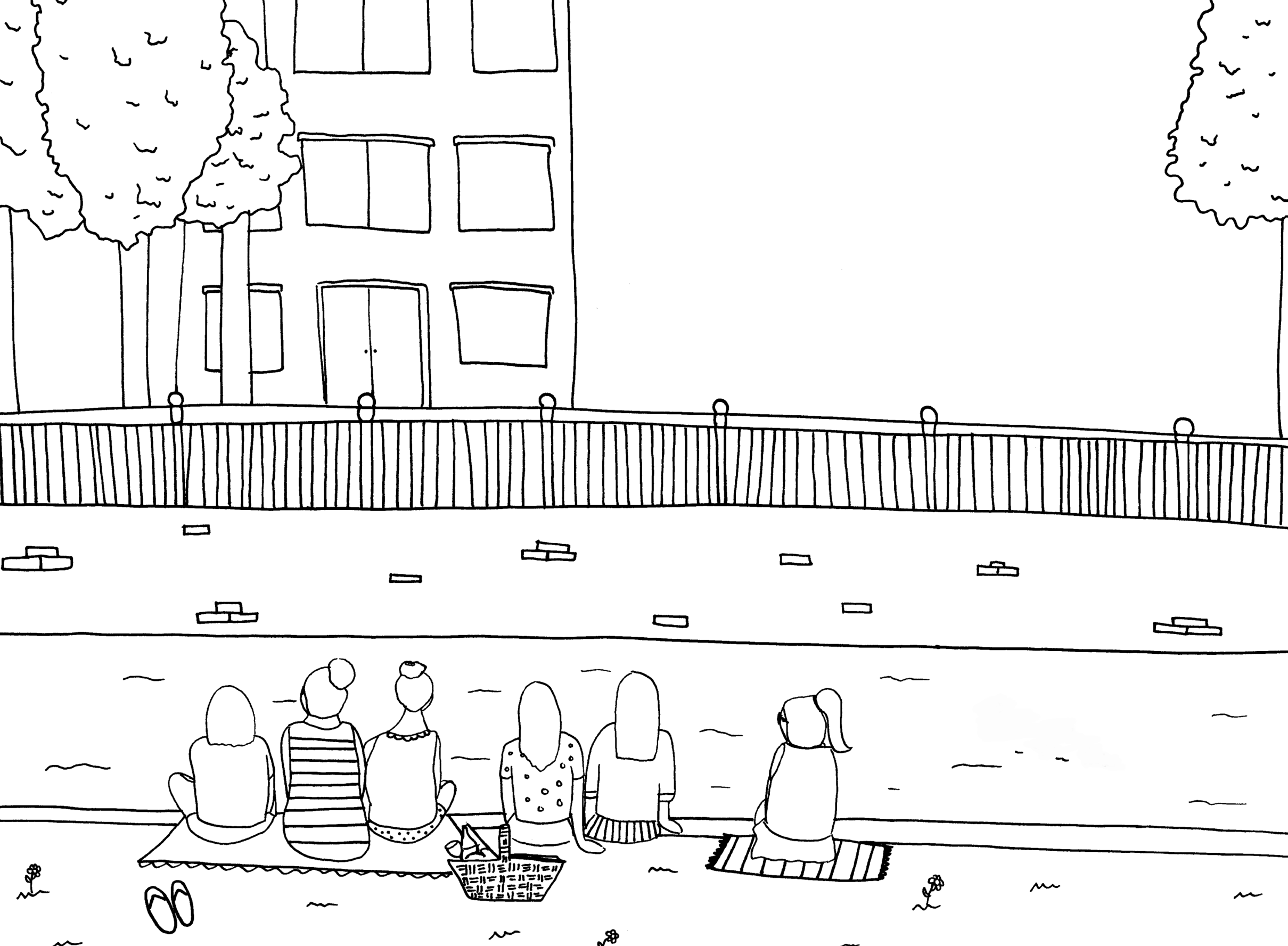
☐ .....



# TODAY IS GOING TO BE A GREAT DAY

Go for a picnic in the park, cycle part of the Berlin Wall Trail, or discover one of the many lakes in Brandenburg and have a swim. Delightful! Going for a bike ride is cooling and you can visit the outskirts of the city. Rent a bicycle and go out to explore.

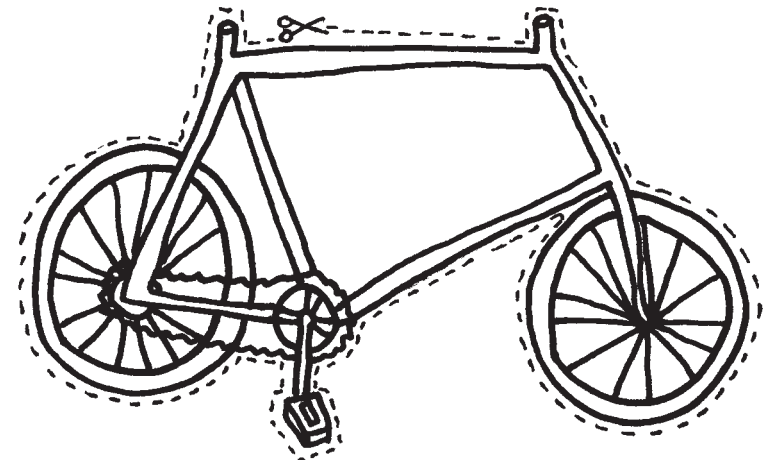
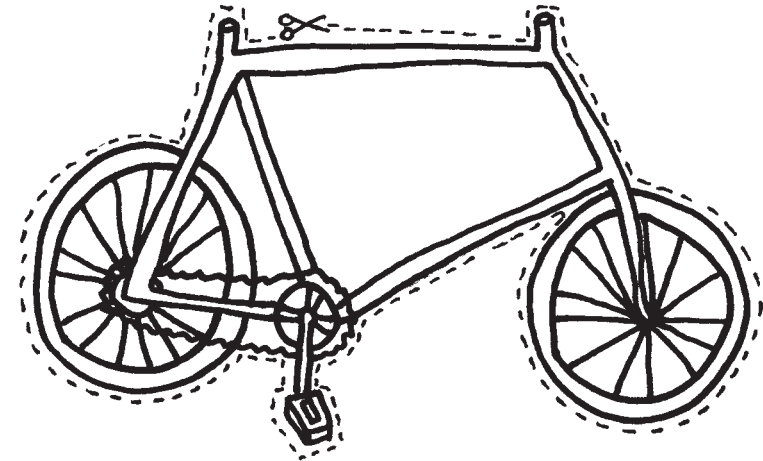
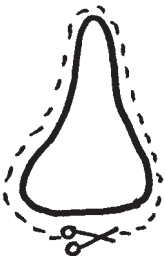
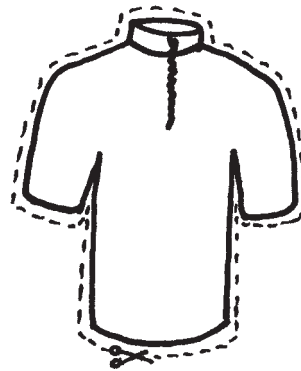


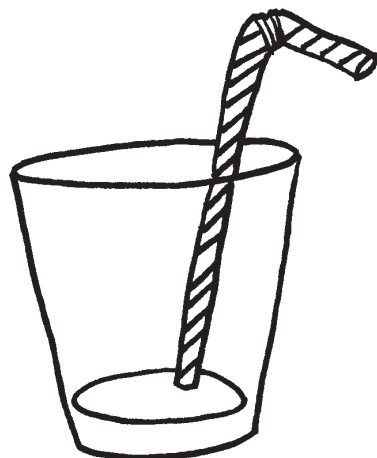
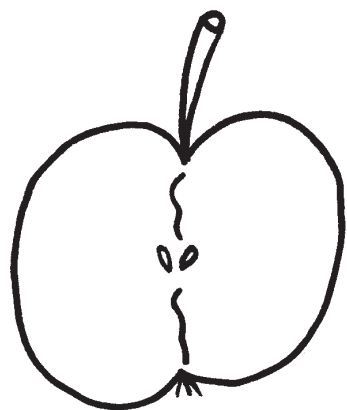




# FIX YOUR FIXIE

Yes, cool, a hip city bike. With or without brakes, in gold and white or bright pink and orange. The handlebars are very, very important: narrow, straight or bent. And then there's the saddle. Made from expensive English leather that cannot withstand the rain or maybe rather a nice plastic one after all. The bicycle as an accessory rather than a means of transport, we love it.





# SUMMER SCHORLE

A much-loved summer drink is *Apfelschorle*: half sparkling mineral water, half apple juice. Its varieties are endless, and fresh herbs also make it wonderfully refreshing.

## RHUBARB-WATERMELON-BASIL

2 parts mineral water  
2 parts rhubarb juice  
1 small, long piece of watermelon,  
without the peel & seeds  
1 sprig of basil  
ice cubes

Pour the water and the juice into a glass. Add watermelon and basil and serve with ice cubes.

## WHITE WINE-LEMON-VERBENA

2 parts mineral water  
2 parts white wine or grape juice  
1 slice of lemon  
3 leaves of verbena  
ice cubes

Pour the water and the wine into a glass. Add lemon and verbena and serve with ice cubes.

## ELDERBERRY-STRAWBERRY-MINT

2 parts mineral water  
1 part elderberry juice  
1 part strawberry juice  
2 sprigs of mint  
ice cubes

Pour the water and the juice into a glass. Add mint and serve with ice cubes.

